



Shandong Claire Environmental Technology Co., Ltd

Professional manufacturing of fiberglass pressure vessels

Shandong • Liaocheng

COMPANY PROFILE

Shandong Klaier Environmental Technology Co., Ltd. is located in Liaocheng, Shandong, from Jiangbei Shuicheng in 2018. Established in March, it is an emerging and technologically advanced fiberglass pre-pressure vessel with complete quality control for membrane water treatment. Professional manufacturer of containers and derivative products.

We have a technical team with over ten years of professional experience, using the most advanced computer control technology in China. We produce multi-axis winding, curing system, high-precision opening and surface treatment processes, with excellent craftsmanship. Our professional team's rigorous attitude towards product quality excellence has led to our products being exported both domestically and internationally. Received unanimous praise from a large number of customers. Our company's main business is the industrialization of new materials and equipment in the water industry. R&D, production, and service, with the leading product being the separation membrane shell. The product is applied to water pollution control technology in the field of resources and environment, with over ten national projects. The patent has been certified under the integrated management system of GB/T19001, GB/T24001, and GB/T28001.

DEVELOPMENT HISTORY



K80E Series Module Housing

K80E low pressure



K80E high pressure



Description:

Low voltage: K80E series membrane housing 300PSI/450PSI (1 core - 7 core)

High voltage: K80E series membrane shell 600PSI/800PSI/1000PSI/1200PSI/1500PSI/
1800PSI/2000PSI (1 core - 7 core)

The product has passed the EU CE certification and can withstand over 100000 fatigue tests and 6 times the explosionHydrostatic testing.

The product is used in complex media environments and has been used in China since 2018Large and medium-sized projects both domestically and internationally.

K80E Series Module Housing

Technology:

Shandong Claire Environmental Technology Co., Ltd. has its own research and development team, adopting the most advanced computer-controlled multi-axis winding machine in China · Curing system · The first in China independently developed high-precision automatic drilling equipment and advanced equipment for surface treatment. Good FRP performance testing methods to produce high-quality (Kreer standard) fiberglass Series products such as membrane shells.

Technical Parameter:

name	8-inch end opening low-pressure membrane housing	8-inch end opening high-pressure membrane housing
model	K80S300/450	K80S600/800/1000/1200/1500/1800/2000
Design pressure	300/450PSI	600/800/1000/1200/1500/1800/2000PSI
fatigue test	100000 times	100000 times
burst pressure	6X	6X
Membrane components can be installed	1-7	1-7
Medium range	PH 3-11	PH 3-11
Temperature resistance range	-10°C-66°C (14°F-150°F)	-10°C-66°C (14°F-150°F)
Raw/concentrated water outlet Size specifications	1.5" / 2" / 2.5" / 3"	1.5" / 2" / 2.5" / 3"
Clean water outlet Size specifications	1"	1"



EU CE certification



ISO9001



Credit rating approval


 High and new
technology enterprises

 Hygiene permit
approval document

 National Patent
Certification



Professional manufacturer of fiberglass pressure vessels



Shandong Claire Environmental Technology Co., Ltd

www.sdklehj.com

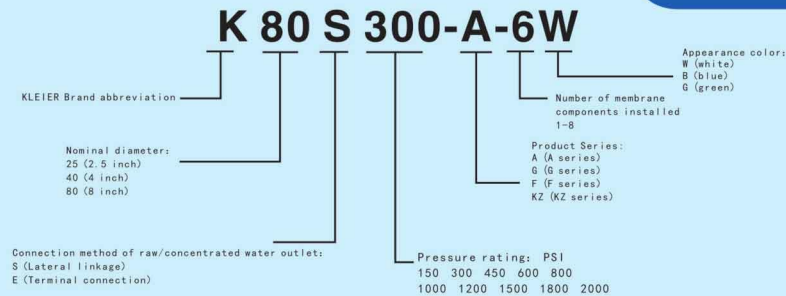


PRODUCT

Claier Environmental Technology Co., Ltd. Water Treatment Fiberglass Pressure Vessels and Derived Products Adopting the most advanced computer controlled multi axis winding and curing system in China, high-precision opening, and Surface treatment technology, product application in water pollution control technology in the field of resources and environment, Has over ten national patents and has passed GB/T19001, GB/T24001, and GB/T28001 Integrated management system certification.

The leading product is the separation membrane shell, and the product pressure specifications include: 300PSI, 450PSI, 600PSI, 800PSI, 1000PSI, 1200PSI, 1500PSI, 1800PSI, 2000PSI, etc.

Product specifications



Higher level of fiberglass pressure vessel manufacturing



Shandong Claire Environmental Technology Co., Ltd

Address: No. 9 Anju Road, Jiaming Industrial Park,
Liaocheng City, Shandong Province

Mobile: 17706350266 TEL: 0635-3343158 Http://:www.sdklehj.com

K80S Series Module Housing

K80S low pressure



K80S high pressure



Description:

Low voltage: K80S series membrane housing 300PSI/450PSI (1 core - 7 core)

High voltage: K80S series membrane shell 600PSI/800PSI/1000PSI/1200PSI/1500PSI/
1800PSI/2000PSI (1 core - 7 core)

The product has passed the EU CE certification and can withstand over 100000 fatigue tests and 6 times the explosionHydrostatic testing.

The product is used in complex media environments and has been used in China since 2018Large and medium-sized projects both domestically and internationally.

K80S Series Module Housing

Technology:

Shandong Claire Environmental Technology Co., Ltd. has its own research and development team, adopting the most advanced computer-controlled multi-axis winding machine in China · Curing system · The first in China independently developed high-precision automatic drilling equipment and advanced equipment for surface treatment. Good FRP performance testing methods to produce high-quality (Kreer standard) fiberglass Series products such as membrane shells.

Technical Parameter:

name	8-inch side opening low-pressure membrane housing	8-inch side opening high-pressure membrane housing
model	K80S300/450	K80S600/800/1000/1200/1500/1800/2000
Design pressure	300/450PSI	600/800/1000/1200/1500/1800/2000PSI
fatigue test	100000 times	100000 times
burst pressure	6X	6X
Membrane components can be installed	1-7	1-7
Medium range	PH 3-11	PH 3-11
Temperature resistance range	-10°C-66°C (14°F-150°F)	-10°C-66°C (14°F-150°F)
Raw/concentrated water outlet Size specifications	1.5 " / 2 " / 2.5 " / 3 "	1.5 " / 2 " / 2.5 " / 3 "
Clean water outlet Size specifications	1 "	1 "



EU CE certification



ISO9001



Credit rating approval


 High and new
technology enterprises

 Hygiene permit
approval document

 National Patent
Certification

K40E Series Module Housing

K40E low pressure



K40E high pressure



Description:

Low voltage: K40E series membrane housing 300PSI/450PSI (1 core - 4 core)

High voltage: K40E series membrane shell 600PSI/800PSI/1000PSI/1200PSI
(1 core - 4 core)

The product has passed the EU CE certification and can withstand over 100000 fatigue tests and 6 times the explosionHydrostatic testing.

The product is used in complex media environments and has been used in China since 2018Large and medium-sized projects both domestically and internationally.

K40E Series Module Housing

Technology:

Shandong Claire Environmental Technology Co., Ltd. has its own research and development team, adopting the most advanced computer-controlled multi-axis winding machine in China • Curing system • The first in China independently developed high-precision automatic drilling equipment and advanced equipment for surface treatment. Good FRP performance testing methods to produce high-quality (Kreer standard) fiberglass Series products such as membrane shells.

Technical Parameter:

name	4-inch side opening low-pressure membrane housing	4-inch side opening high-pressure membrane housing
model	K40E 300/450	K40E 600/800/1000/1200
Design pressure	300/450PSI	600/800/1000/1200PSI
fatigue test	100000 times	100000 times
burst pressure	6X	6X
Membrane components can be installed	1-4	1-4
Medium range	PH 3-11	PH 3-11
Temperature resistance range	-10°C-66°C (14°F-150°F)	-10°C-66°C (14°F-150°F)
Raw/concentrated water outlet Size specifications	3/4 "	3/4 "
Clean water outlet Size specifications	1/2 "	1/2 "



EU CE certification



ISO9001



Credit rating approval


 High and new
technology enterprises

 Hygiene permit
approval document

 National Patent
Certification

K40S Series Module Housing

K40S low pressure



K40S high pressure



Description:

Low voltage: K40S series membrane housing 300PSI/450PSI (1 core - 4 core)

High voltage: K40S series membrane shell 600PSI/800PSI/1000PSI/1200PSI
(1 core - 4 core)

The product has passed the EU CE certification and can withstand over 100000 fatigue tests and 6 times the explosionHydrostatic testing.

The product is used in complex media environments and has been used in China since 2018Large and medium-sized projects both domestically and internationally.

K40S Series Module Housing

Technology:

Shandong Claire Environmental Technology Co., Ltd. has its own research and development team, adopting the most advanced computer-controlled multi-axis winding machine in China · Curing system · The first in China independently developed high-precision automatic drilling equipment and advanced equipment for surface treatment. Good FRP performance testing methods to produce high-quality (Kreer standard) fiberglass Series products such as membrane shells.

Technical Parameter:

name	4-inch side opening low-pressure membrane housing	4-inch side opening high-pressure membrane housing
model	K40S 300/450	K40S 600/800/1000/1200
Design pressure	300/450PSI	600/800/1000/1200PSI
fatigue test	100000 times	100000 times
burst pressure	6X	6X
Membrane components can be installed	1-4	1-4
Medium range	PH 3-11	PH 3-11
Temperature resistance range	-10°C-66°C (14°F-150°F)	-10°C-66°C (14°F-150°F)
Raw/concentrated water outlet Size specifications	1"	1"
Clean water outlet Size specifications	3/4"	1/4"



EU CE certification



ISO9001



Credit rating approval


 High and new
technology enterprises

 Hygiene permit
approval document

 National Patent
Certification

ST/DTRO series products

**Description:**

8-inch and 10-inch ST/DTRO landfill leachate membrane housings:
75Bar/90Bar/120Bar/150Bar/200Bar.

Product length: 945/1000/1145/1150/1200/1250mm,

Customizable according to customer needs.

Appearance colors: primary color, white, etc., can be customized according to customer needs.

The product (Kreil standard) has passed the EU CE certification and can withstand over 100000 fatigue tests and 6 times Blasting water pressure test. The product is used in complex media environments and has been used domestically and internationally since 2018. Large and medium-sized projects.

ST/DTR0 series products

Technology:

Shandong Claire Environmental Technology Co., Ltd. has its own research and development team, adopting the most advanced computer-controlled multi-axis winding machine in China · Curing system · The first in China independently developed high-precision automatic drilling equipment and advanced equipment for surface treatment. Good FRP performance testing methods to produce high-quality (Kreer standard) fiberglass series products such as membrane shells.

Technical Parameter:

specifications	75Bar	90Bar	120Bar	150Bar	200Bar
L	945mm	1000mm	1150mm	1200mm	1250mm

Colors and sizes can be customized according to customer needs



EU CE certification



ISO9001



Credit rating approval



High and new technology enterprises



Hygiene permit approval document



National Patent Certification

KZ80E Series Membrane Housing



Description:

There are suspended solids, colloids, organic matter, and microorganisms in the raw water of the water treatment system. And salt crystallization, these substances can cause pollution to the reverse osmosis membrane components. Therefore, in the reverse osmosis system, the pre-treatment system will remove these pollutants, reducing the impact on the membrane components. Reduce pollution and extend the operating time of the system. However, due to the inability of the preprocessing system to completely treat these pollutants, therefore, the membrane components will also generate pollution after operating for a period of time. This leads to a decrease in system performance, which requires cleaning of membrane components.

The Kreer KZ80S series membrane cleaning specialized container is designed specifically for membrane component cleaning. The biggest feature of this product is the rapid disassembly and assembly of the end cover to cope with the membrane. Frequent loading and unloading of membrane components during component cleaning process, improving efficiency, reducing time, and labor costs, in addition, the product has excellent corrosion resistance and can withstand various cleaning agents for corrosive substances.

KZ80E Series Membrane Housing

Technology:

Shandong Claire Environmental Technology Co., Ltd. has its own research and development team, adopting the most advanced computer-controlled multi-axis winding machine in China · Curing system · The first in China · Independently developed high-precision automatic drilling equipment and advanced equipment for surface treatment · Good FRP performance testing methods to produce high-quality (Kreer standard) fiberglass Series products such as membrane shells.

Technical Parameter:

name	8 " washed fiberglass membrane shell
model	KZ80E 300
Design pressure	300PSI
Applicable medium range	PH 3-11
Temperature resistance range	-10°C-66°C (14°F-150°F)



EU CE certification



ISO9001



Credit rating approval



High and new technology enterprises



Hygiene permit approval document



National Patent Certification

KZ40E Series Membrane Housing



Description:

There are suspended solids, colloids, organic matter, and microorganisms in the raw water of the water treatment system. And salt crystallization, these substances can cause pollution to the reverse osmosis membrane components. Therefore, in the Before the reverse osmosis system, the pre-treatment system will remove these pollutants, reducing the impact on the membrane components. Reduce pollution and extend the operating time of the system. However, due to the inability of the pre-treatment system to completely treat these pollutants, therefore, the membrane components will also generate pollution after operating for a period of time. This leads to a decrease in system performance, which requires cleaning of membrane components.

The Kreer KZ40S series membrane cleaning specialized container is designed specifically for membrane component cleaning. The biggest feature of this product is the rapid disassembly and assembly of the end cover to cope with the membrane frequent loading and unloading of membrane components during component cleaning process, improving efficiency, reducing time, and labor costs, in addition, the product has excellent corrosion resistance and can withstand various cleaning agents for corrosive substances.

KZ40E Series Membrane Housing

Technology:

Shandong Claire Environmental Technology Co., Ltd. has its own research and development team, adopting the most advanced computer-controlled multi-axis winding machine in China · Curing system · The first in China independently developed high-precision automatic drilling equipment and advanced equipment for surface treatment. Good FRP performance testing methods to produce high-quality (Kreer standard) fiberglass Series products such as membrane shells.

Technical Parameter:

name	4 " washed fiberglass membrane shell
model	KZ40E 300
Design pressure	300PSI
Applicable medium range	PH 3-11
Temperature resistance range	-10°C-66°C (14°F-150°F)



EU CE certification



ISO9001



Credit rating approval



High and new technology enterprises



Hygiene permit approval document



National Patent Certification

Horizontal fiberglass high flow filter series
Vertical fiberglass high flow filter series



Description:

The horizontal fiberglass high flow filter series is divided into: end connected and side connected, and the filter element is divided into For Pall Pall and Parker Parker models; The vertical fiberglass high flow filter series is divided into: foldable filter element, filter bag, PPMelt blown filter element, etc.

The product has passed 1.5 times the water pressure test and can withstand over 100000 fatigue test explosions Breaking water pressure test.

The product has corrosion resistance, high pressure resistance, no leakage, convenient disassembly and assembly, and a suitable lifespan Long wait for a series of advantages and disadvantages.

Horizontal fiberglass high flow filter series

Vertical fiberglass high flow filter series

Technology:

Shandong Claire Environmental Technology Co., Ltd. has its own research and development team, adopting the most advanced computer-controlled multi-axis winding machine in China · Curing system · The first in China independently developed high-precision automatic drilling equipment and advanced equipment for surface treatment Good FRP performance testing methods to produce high-quality (Kreer standard) fiberglass Series products such as membrane shells.

Technical Parameter:

Filter element type	External pressure filter element	Internal pressure filter element
Module length	20 inches/40 inches/60 inches	
Membrane element diameter	6 inches	
Connection method of inlet/outlet	Side in end out	Side In /Side Out
Inlet/outlet size	2 " /3 " /4 " Trench	
Module Housing Design Pressure	100PSI/150PSI	
Temperature resistance range	-10°C-49°C	
Working medium	water, PH3-11	



EU CE certification



ISO9001



Credit rating approval



High and new technology enterprises



Hygiene permit approval document



National Patent Certification

K25E Series Module Housing

K25E Straight



K25E Low pressure/high pressure



Description:

There are three specifications for loading membrane components: 14 inches, 21 inches, and 40 inches in length.
Low voltage K25E series membrane housing 300PSI.
High voltage K25E series membrane housing 1000PSI.
The product has passed the EU CE certification and can withstand over 100000 fatigue tests and 6 times the burst water pressure testing. The product is used in complex media environments and has been used in large and medium-sized projects both domestically and internationally since 2018.

K25E Series Module Housing

Technology:

Shandong Claire Environmental Technology Co., Ltd. has its own research and development team, adopting the most advanced computer-controlled multi-axis winding machine in China · Curing system · The first in China independently developed high-precision automatic drilling equipment and advanced equipment for surface treatment. Good FRP performance testing methods to produce high-quality (Kreer standard) fiberglass series products such as membrane shells.

Technical Parameter:

name	2.5 inch end open low pressure membrane housing	2.5 inch end open high pressure membrane housing
model	W25E 300	W25E 1000
Design pressure	300PSI	1000PSI
fatigue test	100000次	100000次
burst pressure	6X	6X
Membrane components can be installed	2514, 2521, 2540	2514, 2521, 2540
Medium range	PH 3-11	PH 3-11
Temperature resistance range	-10°C-66°C (14°F-150°F)	-10°C-66°C (14°F-150°F)
Raw/concentrated water outlet Size specifications	1 "	1 "
Clean water outlet Size specifications	3/4 "	1/4 "



EU CE certification



ISO9001



Credit rating approval


 High and new
technology enterprises

 Hygiene permit
approval document

 National Patent
Certification



EU CE certification



ISO9001



Credit rating approval



High and new technology enterprises



Hygiene permit approval document



National Patent Certification

8040S quick release reverse osmosis membrane shell VS dedicated membrane shell for washing



4040 quick installation fiberglass membrane housing



8 "end, side connected membrane housing



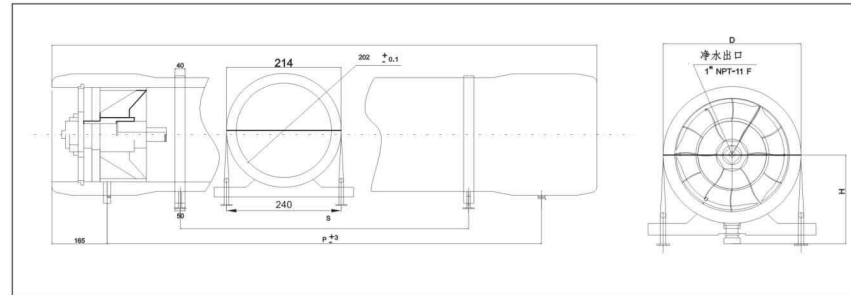
Product Selection:

1. Connection type: 8040 end connection, 8040 side connection (honeycomb), 8040 side connection (flat plate)
2. Pressure type: 150, 300, 450, 600, 800, 1000PSI
3. Length type: 1 to 7 cores
4. Appearance color: The marked configuration is white, which can be customized according to customer needs

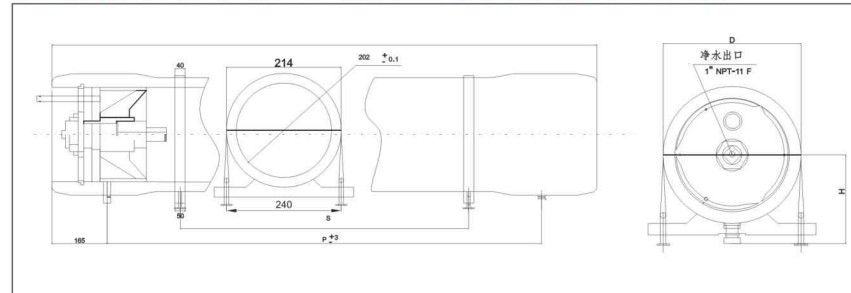
technical requirement:

1. The manufacturing method of the membrane shell follows the JC692-1998 standard;
2. The design pressure of the membrane shell is 150, 300, 450, 600, 800, and 1000PSI. Allowable working temperature range -7°C -49°C
3. The membrane shell penetration test is conducted using a water pressure test method, with a test pressure of 1.5 times the design pressure

8 "Module Housing End Connection Installation Diagram



Installation diagram of 8 "membrane housing side connection



Main installation dimensions

Working pressure	Number of sections	L (mm)	S (mm)	P (mm)	Working pressure	Number of sections	L (mm)	S (mm)	P (mm)
300PSI	1	1459	700	1139	1000PSI	1	1524	700	1142
	2	2475	1454	2155		2	2540	1454	2158
	3	3491	2064	3171		3	3556	2064	3174
	4	4510	1646*2	4190		4	4574	1646*2	4192
	5	5526	2000*2	5206		5	5588	2000*2	5208
	6	6542	2357*2	6222		6	6606	2357*2	6226
	7	7558	3084*2	7238		7	7622	3084*2	7242

Note: The main dimensions of the 8 "end connected membrane housing do not have P

4 "end, side connected membrane housing



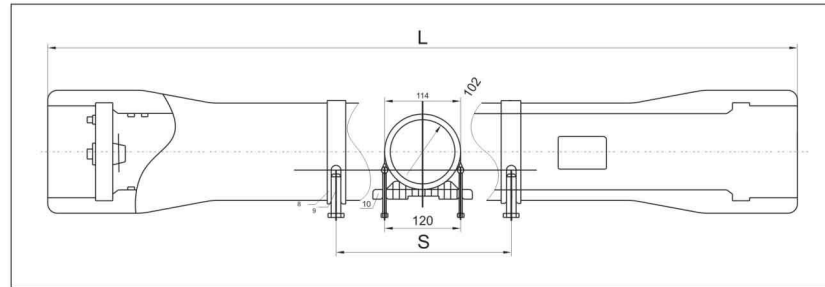
Product Selection:

1. Connection type: 4040 end connection 4040 side connection
2. Pressure type: 150, 300, 450, 600, 800, 1000PSI
3. Length type: 1 to 5 cores
4. Appearance color: The marked configuration is white, which can be customized according to customer needs

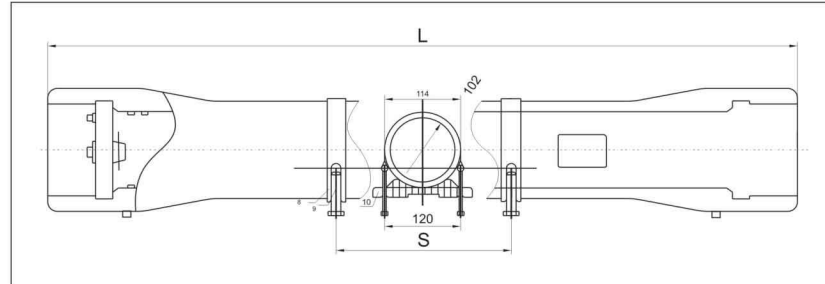
technical requirement:

1. The manufacturing method of the membrane shell follows the JC692-1998 standard;
2. The design pressure of the membrane shell is 150, 300, 450, 600, 800, and 1000PSI, Allowable working temperature range -7°C -49°C
3. The membrane shell penetration test is conducted using a water pressure test method, with a test pressure of 1.5 times the design pressure

4 "Module Housing End Connection Installation Diagram



Installation diagram of 4 "membrane housing side connection



Main installation dimensions

工作压力	节数	L (mm)	S (mm)	P (mm)	工作压力	节数	L (mm)	S (mm)	P (mm)
300PSI	1	1118/1235	700	1016	1000PSI	1	1177/1277	700	1016
	2	2135/2251	1350	2032		2	2193/2293	1350	2032
	3	3152/3268	1960	3050		3	3210/3368	1960	3050
	4	4168/4284	1580*2	4066		4	4226/4326	1580*2	4066

Note: The main dimensions of the 4 "end connected membrane housing do not have P

Qualification certification



EU CE certification



ISO9001



Credit rating approval



High and new
technology enterprises



Hygiene permit
approval document



National Patent
Certification



Enterprise Purpose: Integrity, Innovation, Pragmatism, and Efficiency

Business philosophy: Excellent quality

Customer First

First class service

Shandong Claire Environmental Technology Co., Ltd

Mobile: 17706350266

Address: No. 9 Anju Road, Jiaming Industrial Park,
Liaocheng City, Shandong Province

TEL: 0635-3343158

Http://:www.sdklehj.com